

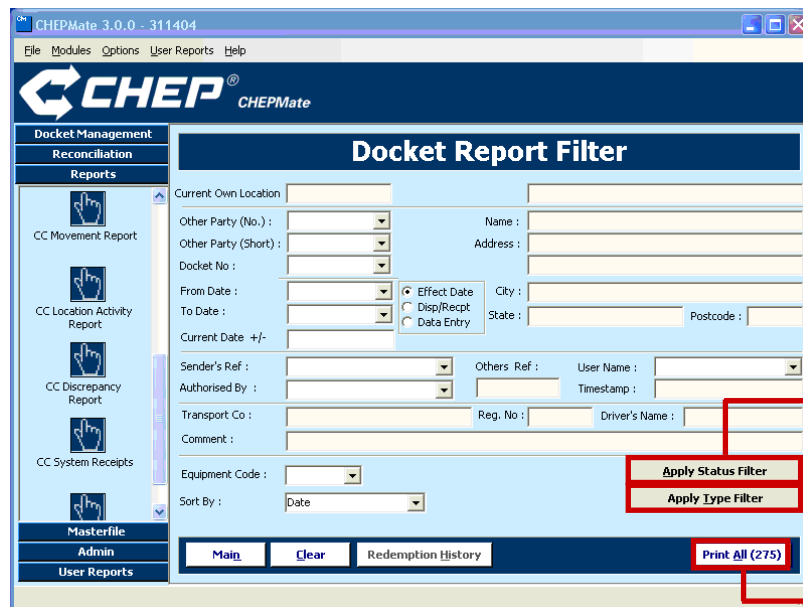
2ic Pallets allows you to import movements from other applications including CHEPMate STAR, CHEP BlueTrack, CHEP WinETA and Loscam HMS.

<b>Step</b>	<b>Comments</b>
-------------	-----------------

1. What program are you importing from?  
 CHEPMate STAR ▶ **Go to step 2**  
 CHEP BlueTrack ▶ **Go to step 11**  
 CHEP WinETA ▶ **Go to step 15**  
 Loscam HMS ▶ **Go to step 19**

**Preparing data from CHEPMate STAR**

2. Open CHEPMate STAR.



3. In the list of functions on the left of the screen, select Reports, then Docket Report. The Docket Report Filter screen displays.
4. On the lower right of the screen, click on the Apply Status Filter button. The Status Criteria window displays.



## Procedure 4 Importing Initial Movements (continued)

### Step

### Comments

- In the MUST NOT be column, select Invoiced and Cancelled, and make sure all other options are set to Any (as shown below) then click on the OK button.

	MUST be	MUST NOT be	Any
Added	<input type="radio"/>	<input type="radio"/>	<input checked="" type="radio"/>
Created	<input type="radio"/>	<input type="radio"/>	<input checked="" type="radio"/>
CHEPCard	<input type="radio"/>	<input type="radio"/>	<input checked="" type="radio"/>
From CHEP	<input type="radio"/>	<input type="radio"/>	<input checked="" type="radio"/>
To CHEP	<input type="radio"/>	<input type="radio"/>	<input checked="" type="radio"/>
From Own	<input type="radio"/>	<input type="radio"/>	<input checked="" type="radio"/>
To Own	<input type="radio"/>	<input type="radio"/>	<input checked="" type="radio"/>
Error	<input type="radio"/>	<input type="radio"/>	<input checked="" type="radio"/>
Printed	<input type="radio"/>	<input type="radio"/>	<input checked="" type="radio"/>
Redeemed	<input type="radio"/>	<input type="radio"/>	<input checked="" type="radio"/>
Reversed	<input type="radio"/>	<input type="radio"/>	<input checked="" type="radio"/>
Replaced	<input type="radio"/>	<input type="radio"/>	<input checked="" type="radio"/>
Confirmed	<input type="radio"/>	<input type="radio"/>	<input checked="" type="radio"/>
Invoiced	<input type="radio"/>	<input checked="" type="radio"/>	<input type="radio"/>
Cancelled	<input type="radio"/>	<input checked="" type="radio"/>	<input type="radio"/>
Rolled Over	<input type="radio"/>	<input type="radio"/>	<input checked="" type="radio"/>
Rejected	<input type="radio"/>	<input type="radio"/>	<input checked="" type="radio"/>

**Step 5** Select **MUST NOT be Invoiced or Cancelled**

- On the lower right of the screen, click on the Apply Type Filter button. The Docket Type window displays.
- In the Extent field, select Selection, then tick All Transfers, Issues & Dehires and Corrections, as shown below, then click OK.

In addition, tick All Exchanges if you have been tracking exchanges in CHEPMate STAR and want the movements transferred to 2ic Pallets.

**Step 7** Tick **All Transfers, Issues & Dehires and Corrections**

- On the original screen, click on the Print All button to display the report on the screen.
- Click the Export CSV button and save the file to a known location on your hard disk.
- ▶ Go to step 19

The file is in a format called comma separated values (\*.csv).

### Preparing data from CHEP BlueTrack

- Open CHEP BlueTrack.
- On the Enquiries and Support screen, select option 1, Master Control Cards.
- On the Master Control Cards screen, select 'A' for All Locations, 'A' for All Products, 'A' for All Note Types, 'U' for Uninvoiced, 'F' for Full Detail and 'A' for All Dates.

CHEP BlueTrack is a pallet application provided by CHEP in the UK and Ireland.

## Procedure 4 Importing Initial Movements (continued)

	Step	Comments
	<b>14.</b> Press F4 to finish, then 'P' to Produce. The report is saved as a file to your hard drive. It is in the folder set up for receiving BlueTrack reports.	
<b>Preparing data from CHEP WinETA</b>	<b>15.</b> Open CHEP WinETA.	CHEP BlueTrack is a pallet application provided by CHEP in New Zealand.
	<b>16.</b> On the WinETA Main Screen click Re-Export.	
	<b>17.</b> From the ETA Batches list, select all export batches that have been sent in the current period, and click on the >> button.	The selected batches appear in the Batches to Re-Export list. If you make a mistake, click on the << button to return a batch to the ETA Batches list.
	<b>18.</b> Click Re-Export.	This generates a text file containing the movement records. This file is called xfer.txt and is saved in the location specified in WinETA's Configuration options. This is usually C:\Program Files\CHEP New Zealand\WinETA\Chep Xfers.
<b>Importing Movement records (all programs)</b>	<b>19.</b> Open 2ic Pallets.	
	<b>20.</b> From the Main form, select the Operations tab then Import Data.	
	<b>21.</b> Click on the Slave Movements tab.	
	<b>22.</b> At the bottom left of the form, click on the Read Data button, then find and open the data file you require.	If you are importing from CHEPMate STAR, CHEP BlueTrack or CHEP WinETA this will be the file you saved earlier.  If you are importing from Loscam HMS, open the HMS.mdb file which is usually located in the folder C:\Program Files\HMS\DATA.
	<b>23.</b> Click Yes to confirm that 2ic Pallets has correctly detected the type of file you are importing.	
	<b>24.</b> Click on the Check Data button to validate the imported data.	If you are prompted to fix missing or incorrect data then you need to check the records to which the message refers, otherwise a dialogue box displays confirming that the data has been checked.
	<b>25.</b> Click on the Save Records button to save the imported records into 2ic Pallets.	A dialogue box displays the number of records imported, how many have been exactly matched to existing movements and discarded and how many have been partially matched and sent to the Imported Movements form for manual processing.